



# THE CSF MONTHLY AT VILLAGES AT MARLEY STATION

Official Newsletter of Community Services Foundation



**FAIRFIELD.**  
Creating Better Living for Better Lives

The programs at Villages at Marley Station are provided in partnership with Community Services Foundation (CSF) and Fairfield Residential.

## Table of Contents

- Letter from the Program Director **PAGE 01**
- Community Updates **PAGE 02**
- Adult & Senior Education Updates **PAGE 03**
- Youth & Teen Education Updates **PAGE 04**
- Wellness Reminder **PAGE 05**
- Youth & Teen Calendar **PAGE 06**
- Adult & Senior Calendar **PAGE 07**



**Assistant Regional Manager**  
Ana De La Rosa Pena



**Site Coordinator**  
Zian Mukom

**E-Mail:** [programs@csfnd.org](mailto:programs@csfnd.org) | **Phone:** (301) 925-4251

## Letter from the Program Director

Written by John Mensah

As we step into March and celebrate **Women's History Month**, we reflect on the powerful words of **Coretta Scott King**:

"The woman power of this nation can be the power which makes us whole and heals the rotten community, now so shattered by war and poverty and racism. I have great faith in the power of women who will dedicate themselves wholeheartedly to the task of remaking our society."

We reaffirm our commitment to uplifting and empowering every member of our community. We continue to stand for gender equality, ensuring that **women of all ages** have access to the **resources, education, and opportunities** they need to thrive—wherever life may take them!

As an organization, we remain committed to enriching the lives of residents in managed communities through impactful services and programs that foster growth and development. Our dedication to gender equality ensures that women of all ages can access the resources they need to thrive, no matter where life takes them.

This commitment shines through in our vibrant and engaging after-school program. With a strong focus on STEAM learning, our learning lab sessions blend direct instruction with hands-on, project-based learning. Designed to spark curiosity and creativity, these programs are guided by experienced educators who inspire and empower students every step of the way.

We prioritize delivering programs and services that cater to the unique needs of adults and seniors in our communities. From career readiness workshops and financial literacy classes to health and wellness initiatives, our offerings are designed to empower and support you. Whether you join us in person at the community center or participate virtually from home, our dedicated team will guide you every step of the way.

Thanks to the generosity of your apartment community, all our programs and services are provided free of charge, bringing valuable resources right to your doorstep. The community center is a vibrant hub for growth, connection, and support throughout the month and beyond. We welcome your ideas and feedback—feel free to reach out to your site coordinator, call our main office at 301-925-4251, or email us at [programs@csfnd.org](mailto:programs@csfnd.org).

# March

## EVENTS AT A GLANCE

- 🐦 **Open Rec from 11 AM - 6 PM: March 31**
- 🐦 **NO Parent Meeting this month!**
- 🐦 **PG Summer Youth Employment Program Application Closes: March 31**

### Community Manager Message

Dear Residents,

As we step into March, there are several exciting events and important reminders to keep in mind:

Important Property Reminders:

- Maintenance Requests: If you need any repairs or maintenance in your apartment, please submit your requests as soon as possible.
- Parking Regulations: Please remember to park only in designated areas. Illegally parked vehicles may be towed at the owner's expense.
- Quiet Hours: To ensure a peaceful environment for all residents, please observe quiet hours.

Thank you for being a part of our community. We look forward to a wonderful month ahead!



### FEBRUARY HIGHLIGHTS





# Adult & Senior Education Updates

Written by Tiffani Grier

This month's adult and senior program offers an array of engaging activities and events aimed at fostering social interaction, learning, and overall wellness.

- Financial Literacy class on Mondays to enhance financial understanding
- Health & Wellness classes centered on nutrition, fitness, and mental health
- ESOL classes to assist with basic language skills and document translation
- Career & Job Readiness class on Wednesdays focused on mastering job interviews and common questions

Don't forget to review the program schedule for specific dates and times of events, and sign up to participate in the fun!



**NEW LINK!**

**Monday - Thursday**

**Microsoft Teams**

Meeting ID:

**288 855 419 201**

Passcode: **9T2yn9WE**

## CSF'S ADULT & SENIOR EDUCATION SCHEDULE

	10 - 11 A.M	11 A.M. - 12 P.M.	7 - 8 P.M.
MONDAY	<b>Financial Literacy</b>	<b>Health &amp; Wellness</b>	<b>ESOL</b>
TUESDAY			<b>Health &amp; Wellness</b>
WEDNESDAY	<b>Career &amp; Job Readiness</b>	<b>Health &amp; Wellness</b>	<b>ESOL</b>
THURSDAY			<b>Health &amp; Wellness</b>



**Monday - Thursday**

**Microsoft Teams**

Meeting ID: **288 855 419 201**

Passcode: **9T2yn9WE**

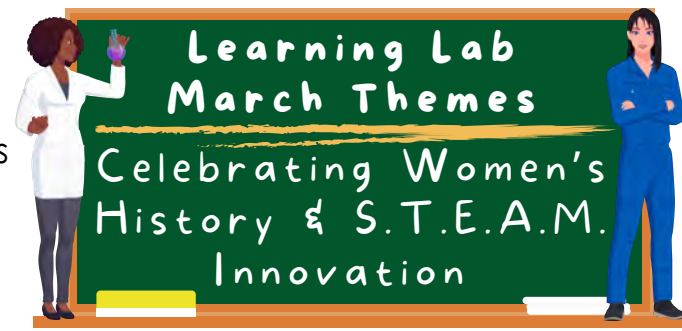
# Youth & Teen Education Updates

Written by Tiffani Grier

As we transition into March, we honor Women's History Month with a focus on trailblazers in science, technology, engineering, arts, and math (S.T.E.A.M.).

March Themes:

- Week 1: Women Who Changed the World: Trailblazers in S.T.E.A.M.
  - Highlighting female inventors, scientists, & mathematicians
  - Exploring Women in the Arts & Media
  - Recognizing Black Women in S.T.E.A.M.
- Week 2: The Science of Storytelling: Theater, Animation, and Digital Art
  - Exploring the science behind stage lighting, sound, & storytelling
  - Learning about female directors, animators, & authors
  - Engaging in animation, digital storytelling, & coding activities
- Week 3: Mathematics in Motion: Patterns, Logic, and Everyday Problem-Solving
  - Exploring Pi Day (March 14) through geometry & real-world applications
  - Applying math in engineering & problem-solving activities
  - Recognizing women mathematicians like Katherine Johnson
- Week 4: Our Planet, Our Future: Sustainability, Nature, and the Environment
  - Learning about Earth & Environmental Science
  - Exploring the work of women environmental scientists
  - Investigating biodiversity through the study of insects & dinosaurs



**Learning Lab**  
**Microsoft Teams**  
Meeting ID:  
**277 760 376 456**  
Passcode:  
**F7qukS**



**Learning Lab focused on Empowering Voices: Celebrating Black Innovators and Changemakers in February**



## No Parent Meeting This Month!



## Health & Wellness

Written by Janel Patrice

March is a significant month for mental health awareness! Several days within the month of March are dedicated to increasing understanding and breaking the stigma around mental health conditions. From self-injury to bipolar disorder, these observances provide opportunities for education, advocacy and support.



For this month, let's center our focus on our loved ones. Specifically, to our children who may be feeling sad and discouraged, and to our staff, who have gone silent and may be showing signs of hopelessness and worthlessness. A positive word goes a long way to those that may be longing for companionship or just to know that they are worthy of love and appreciation.

Today in the world, our children face increasing pressures from school, social media, and personal challenges. Let's encourage parents, teachers, and our own mentors to check in on their mental well-being. Mental health struggles are real, and support is available. For CSF staff, EAP is right at your fingertips and is a free resource for you that is confidential. Ask your HR representative for more information.



In conclusion, whether it's through social media campaigns, community events, or simple conversations, each of us has the power to make a difference. Let us use March as an opportunity to educate support and advocate mental health awareness.

# March 2025

## Youth & Teen Calendar

**MONDAY**

**3**

**Afterschool Club**  
2-6 PM  
**Learning Lab**  
4-5 PM

**TUESDAY**

**4**

**Afterschool Club**  
2-6 PM  
**Learning Lab**  
4-5 PM



**WEDNESDAY**

**5**

**Afterschool Club**  
2-6 PM  
**Learning Lab**  
4-5 PM

**THURSDAY**

**6**

**Afterschool Club**  
2-6 PM  
**Learning Lab**  
4-5 PM



**FRIDAY**

**7**

**Afterschool Club**  
2-6 PM

**10**

**Afterschool Club**  
2-6 PM  
**Learning Lab**  
4-5 PM



**11**

**Afterschool Club**  
2-6 PM  
**Learning Lab**  
4-5 PM

**12**

**Afterschool Club**  
2-6 PM  
**Learning Lab**  
4-5 PM



**13**

**Afterschool Club**  
2-6 PM  
**Learning Lab**  
4-5 PM

**14**

**Afterschool Club**  
2-6 PM



**17**

**Afterschool Club**  
2-6 PM  
**Learning Lab**  
4-5 PM



**18**

**Afterschool Club**  
2-6 PM  
**Learning Lab**  
4-5 PM

**19**

**Afterschool Club**  
2-6 PM  
**Learning Lab**  
4-5 PM



**20**

**Afterschool Club**  
2-6 PM  
**Learning Lab**  
4-5 PM

**21**

**Afterschool Club**  
2-6 PM



**27**

**Afterschool Club**  
2-6 PM  
**Learning Lab**  
4-5 PM

**25**

**Afterschool Club**  
2-6 PM  
**Learning Lab**  
4-5 PM



**26**

**Afterschool Club**  
2-6 PM  
**Learning Lab**  
4-5 PM

**27**

**Afterschool Club**  
2-6 PM  
**Learning Lab**  
4-5 PM



**28**

**Afterschool Club**  
2-6 PM

**31 OPEN REC**  
11 AM - 6 PM

**Learning Lab**  
4-5 PM



**1**



**2**



**3**





# March 2025

## Adult & Senior Calendar

**MONDAY**

**3**  
**Virtual Class Learning**  
10 AM-12 PM,  
7-8 PM



**TUESDAY**

**4**  
**Virtual Class Learning**  
7-8 PM

**WEDNESDAY**

**5**  
**Virtual Class Learning**  
10 AM-12 PM,  
7-8 PM

**THURSDAY**

**6**  
**Virtual Class Learning**  
7-8 PM



**FRIDAY**

**7**

**10**  
**Virtual Class Learning**  
10 AM-12 PM,  
7-8 PM



**11**  
**Virtual Class Learning**  
7-8 PM

**12**  
**Virtual Class Learning**  
10 AM-12 PM,  
7-8 PM



**13**  
**Virtual Class Learning**  
7-8 PM



**17**  
**Virtual Class Learning**  
10 AM-12 PM,  
7-8 PM



**18**  
**Virtual Class Learning**  
7-8 PM

**19**  
**Virtual Class Learning**  
10 AM-12 PM,  
7-8 PM



**20**  
**Virtual Class Learning**  
7-8 PM

**21**



**24**  
**Virtual Class Learning**  
10 AM-12 PM,  
7-8 PM

**25**  
**Virtual Class Learning**  
7-8 PM



**26**  
**Virtual Class Learning**  
10 AM-12 PM,  
7-8 PM

**27**  
**Virtual Class Learning**  
7-8 PM

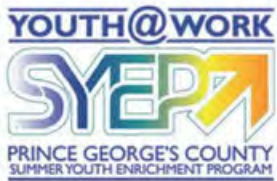


**28**

**31**  
**Virtual Class Learning**  
10 AM-12 PM,  
7-8 PM







# PRINCE GEORGE'S COUNTY SUMMER JOBS!

## About Us

The Prince George's County Summer Youth Enrichment Program (SYEP) provides opportunities for young people, ages 14 to 24, across the County to receive career development, job readiness training and employment.

- Earn money
- Explore a career field
- Learn new skills
- Meet new people

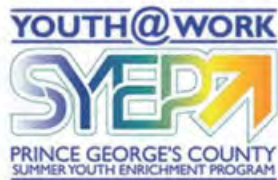
## Get Ready

**Application Dates:**  
March 1 - March 31, 2025

**Program Dates:**  
July 1 - August 8, 2025

**Pay:**  
Hourly and stipend opportunities are available





# CONDADO DE PRINCE GEORGE ¡TRABAJOS DE VERANO!



## Quiénes somos

El Programa de Enriquecimiento Juvenil de Verano del condado de Prince George ofrece oportunidades a los jóvenes de 14 a 24 años de todo el condado para recibir desarrollo profesional, capacitación laboral y empleo.

- Gane dinero
- Aprenda nuevas habilidades
- Explore un campo profesional
- Conozca gente nueva

## Prepárese

**Fechas de presentación de solicitudes:**

1 de marzo - 31 de marzo de 2025

**Fechas del programa:**

1 de julio - 8 de agosto de 2025

**Paga:**

Se ofrecen oportunidades por hora y con remuneración





Community Services Foundation

# We want to hear from you!

We have exciting activities for the whole community to enjoy & we need your input to help improve our services!



[bit.ly/csfRS2025](https://bit.ly/csfRS2025)

We will randomly draw a resident who completed the survey AND provided their email address, with a \$100 gift card!

Contact us if you have additional suggestions:

 [programs@csfnd.org](mailto:programs@csfnd.org)  (301) 925-4251





# ABOUT & SENIOR CLASSES

	10 - 11 A.M	11 A.M. - 12 P.M.	7 - 8 P.M.
MONDAY	<b>Financial Literacy</b>	<b>Health &amp; Wellness</b>	<b>ESOL</b>
TUESDAY			<b>Health &amp; Wellness</b>
WEDNESDAY	<b>Career &amp; Job Readiness</b>	<b>Health &amp; Wellness</b>	<b>ESOL</b>
THURSDAY			<b>Health &amp; Wellness</b>



[bit.ly/CSFTeamsASE](https://bit.ly/CSFTeamsASE)

**Monday - Thursday**  
**Microsoft Teams**  
**Meeting ID: 288 855 419 201**  
**Passcode: 9T2yn9WE**

**Contact us if you need information:**

[programs@csfnd.org](mailto:programs@csfnd.org) **(301) 925-4251**





# PROGRAMA DE EDUCACIÓN PARA ADULTOS Y PERSONAS MAYORES

	10 - 11 A.M	11 A.M. - 12 P.M.	7 - 8 P.M.
LUNES	<b>Educación financiera</b>	<b>Salud y bienestar</b>	<b>ESOL</b>
MARTES			<b>Salud y bienestar</b>
MIÉRCOLES	<b>Preparación profesional y laboral</b>	<b>Salud y bienestar</b>	<b>ESOL</b>
JUEVES			<b>Salud y bienestar</b>



[bit.ly/CSFTeamsASE](https://bit.ly/CSFTeamsASE)

Lunes a Jueves  
Microsoft Teams

ID de reunión: 288 855 419 201

Código de acceso: 9T2yn9WE

Contáctanos si necesitas información:

✉ [programs@csfnd.org](mailto:programs@csfnd.org) ☎ (301) 925-4251





Villages at Marley Station Community Center

# After School Club



## Included for FREE:

- ✓ Fun STEAM Activities
- ✓ Homework Help
- ✓ Snack and/or Meal
- ✓ Digital Literacy
- ✓ Health & Wellness
- ✓ Hands-On Learning
- ✓ Character Development
- ✓ Virtual Games & Trivia
- ✓ Holiday & Days Off School Open Rec

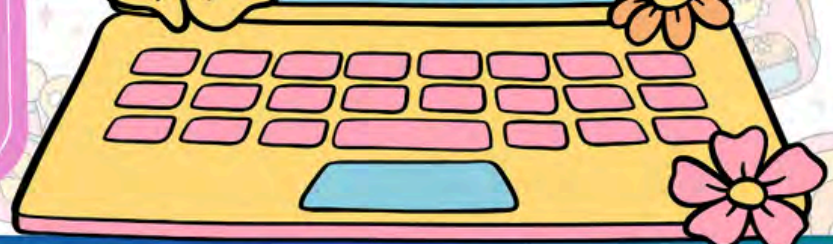
**Begins on August 26, the first day of school!**

**Register Now!**

☎ (301) 925-4251

✉ [programs@csfnd.org](mailto:programs@csfnd.org)

📍 7807 Winborne Drive  
Glen Burnie, MD  
21060



The programs are provided in partnership with Community Services Foundation, Mid City Development, Urban Atlantic, Edgewood Management Corporation, Maryland State Department of Education, Housing Opportunities Commission, Brentwood Associates Limited Partnership, Pratum Companies, Forest Heights Elementary School, St. Mark AME Church, Prince George's County Department of Family Services, MMS Group, FCP, Gates Hudson, and Langdon Park Capital. If is funded, in part, by the Office of the State Superintendent of Education (OSSE) and Nita B. Lowery 21st Center Community Learning Centers (CCLC). Grants provided by the Prince George's County Department of Family Services, a grant made possible through a partnership with Prince George's County Department of Family Services and Maryland State Department of Education, a generous grant provided by the District of Columbia, and a grant from Learn 24 provided by the District of Columbia.







Villages at Marley Station Centro Comunitario

# Club despues de la escuela



## Incluido GRATIS:

- ✓ Divertidas actividades STEAM
- ✓ Ayuda con las tareas
- ✓ Merienda y/o Comida
- ✓ Alfabetización digital
- ✓ Salud y bienestar
- ✓ Aprendizaje práctico
- ✓ Desarrollo de personaje
- ✓ Juegos virtuales y trivia
- ✓ Días festivos y días libres de escuela Rec. abierta

¡Comienza el 26 de agosto, el primer día de clases!

¡Regístrate ahora!

(301) 925-4251

programs@csfnd.org

7807 Winborne Drive  
Glen Burnie, MD  
21060







Community Services Foundation

# We're coming to your neighborhood!

We have exciting activities for the whole community to enjoy for **FREE!**

**Virtual Adult & Senior Classes**



**Youth Afterschool & Summer Program**

**Call to register now!**

**Community Support & Resources**



We need your input about community offerings, please scan & fill out the survey to make your voice heard!



**Villages at Marley Station** (301) 925-4251  
7807 Winborne Drive

**Glen Burnie, MD 21060** [programs@csfnd.org](mailto:programs@csfnd.org)

[bit.ly/41o27nG](https://bit.ly/41o27nG)



The programs at Villages at Marley Station are provided in partnership with Community Services Foundation (CSF) and Fairfield Residential.







# ¡Vamos a tu barrio!

¡Tenemos actividades emocionantes para que toda la comunidad disfrute **GRATIS!**

**Clases virtuales para adultos y personas mayores**



**Programa extracurricular y de verano para jóvenes**

**¡Llama para registrarte ahora!**


**Apoyo y recursos de la comunidad**



Necesitamos su opinión sobre las ofertas de la comunidad, ¡escanee y complete la encuesta para que se escuche su voz!



**Villages at Marley Station**  
7807 Winborne Drive

 (301) 925-4251

 Glen Burnie, MD 21060

 [programs@csfnd.org](mailto:programs@csfnd.org) [bit.ly/41o27nG](https://bit.ly/41o27nG)

Los programas de Villages at Marley Station se ofrecen en asociación con Community Services Foundation (CSF) y Fairfield Residential.

